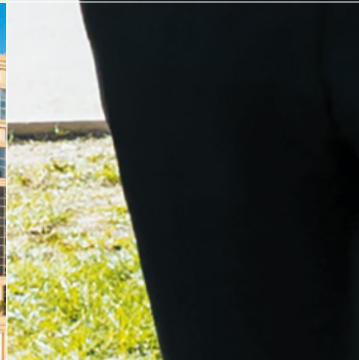


Montpellier
Business
School
since 1897

INTERNATIONAL ENTRANCE EXAM

Grande Ecole

PROGRAMME
MASTER IN MANAGEMENT



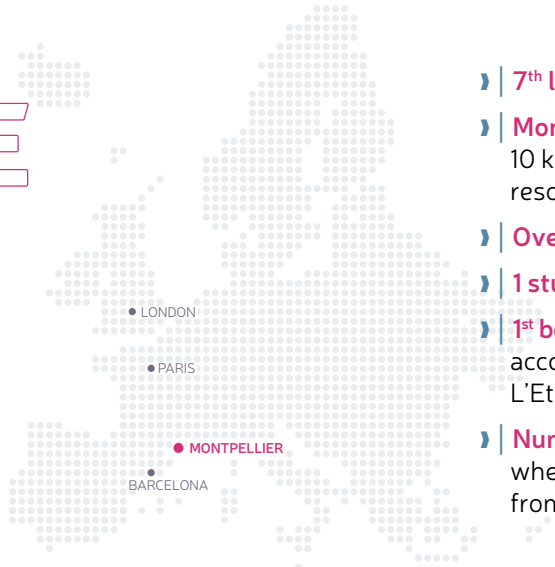
montpellier-bs.com

MONTPELLIER BUSINESS SCHOOL DÉTIENT LES ACCRÉDITATIONS :



MONTPELLIER

THE
PLACE
TO BE
THE PLACE
TO STUDY



- › **7th largest city in France**
- › **Montpellier is ideally located:**
10 km from the sea, just a few hours from ski resorts, 3 hours from Barcelona and Paris.
- › **Over 110,000 students**
- › **1 student out of 7** is an international student
- › **1st best city in France for «student life» in 2019** according to the reference magazine L'Etudiant
- › **Numerous sport and cultural events** where you can discover works by artists from France and abroad



MONTPELLIER BUSINESS SCHOOL IN FIGURES

100+
permanent faculty
60%+
international professors

3,600+
students

1,000+
foreign students
on campus from
over **70** nationalities

17,000+
alumni around
the world in over
90 countries

70+
double degree
Bachelors and Masters,
both from France and
in partnership with
prestigious international
universities

120+
start-ups
incubated

70%
employment
rate prior
to graduation

52nd
BEST MASTER
IN MANAGEMENT
IN THE WORLD

FINANCIAL TIMES
| 2018

10th
BEST FRENCH
GRANDE ECOLE
PROGRAMME

QS RANKING
| 2019

12th
BEST FRENCH
BUSINESS SCHOOL
CONFERRING
A MASTER'S DEGREE

LE PARISIEN
| 2019

12th
BEST FRENCH
GRANDE ECOLE
PROGRAMME

CHALLENGES
| 2018

MONTPELLIER BUSINESS SCHOOL

MAKING A DIFFERENCE

Founded in 1897 and built on strong values, Montpellier Business School offers French and international students, who are unique in their diversity and their backgrounds, the excellency of an internationally recognised French Grande Ecole of Management.

By choosing MBS, you're choosing to become a responsible actor in a changing world.



OUR Mission

« To train, through higher education programmes, managers that are strong in their diversity, aware of their global responsibility in carrying out their missions, and able to adapt to changes in local, national and international environments ».

AN INTERNATIONALLY RECOGNISED ACADEMIC EXCELLENCE



5%
of Business
Schools
worldwide



2%
of Master and
Executive MBA
Programmes



1%
of Business
Schools
worldwide

OUR Values

- › Ethics
- › Openness and diversity
- › Global responsibility and performance



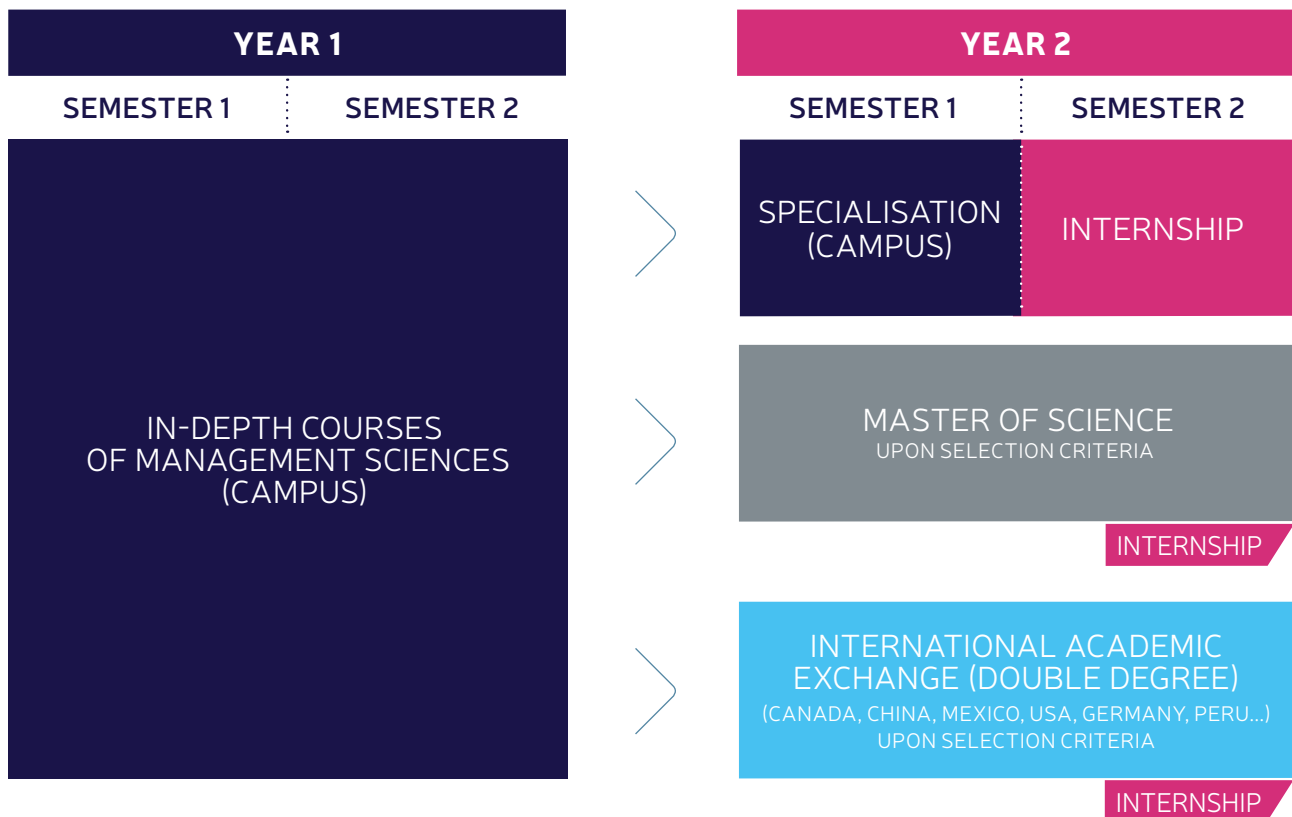
A COMPLETE RANGE OF MANAGEMENT PROGRAMMES

Programmes that combine
interactive courses,
professional projects
and experiences.

- › | Grande Ecole Programme (Master in Management)
- › | Bachelor of International Business Administration
- › | Masters of Science
- › | Executive MBA Programme
- › | Executive Education
- › | Summer School

GRANDE ÉCOLE PROGRAMME

BUILD YOUR COURSE, IN **FRENCH** OR IN **ENGLISH**



YEAR 1: SOME COURSES*

- › Human resources & diversity management
- › Strategic marketing & product management
- › Strategic management
- › Management control
- › Legal issues
- › Digital economy and business model
- › Geopolitics and inter-state strategy
- › Intercultural negotiation
- › ...

YEAR 2: CHOOSE YOUR SPECIALISATION*

- › International business model developer
 - › International corporate finance
 - › International digital marketing
- or
- › Master of Science from Montpellier Business School :
 - Finance (4 specialisations)
 - Marketing (4 specialisations)
 - Digital transformation (2 specialisations)
 - Business excellence (2 specialisations)
 - International business (1 specialisation)

*2019 intake - non-exhaustive list



GAP YEAR (optional)

Possible ideally between Year 1 and Year 2, it aims at developing students' personal and professional maturity.

- › An internship to clarify your professional project
- › The gap year can take various forms (internship, humanitarian...) aiming at preparing study choices for your final year (Master 2)

THE GAP YEAR IS NOT SUBJECT TO TUITION FEES

BUILD A CAREER THAT SUITS YOU

» | CAREER CENTER

Throughout the year, a team of recruitment professionals works full-time on student employability: MBS' career consultants support students at every stage of their professionalisation, from self-evaluation to the search for internships, or employment. As a result, more than 70% of our students are hired before graduation.

» | MBS ENTREPRENEURSHIP CENTER THE START-UP SPIRIT

From information to professional development, MBS Entrepreneurship Center helps students nurturing their entrepreneurial knowledge and supports project promoters from idea through to funding. Coaches and experts oversee tens of projects and start-up creations.

» | A NETWORK OF 17,000 ALUMNI



The Alumni association gathers 17,000 graduates and almost 30 branches worldwide.

Students are free lifetime members of MBS Alumni. They benefit from all services allowing them to be involved in the network from the moment they arrive at school.

» | FRENCH TECH MONTPELLIER



A French center of excellence recognised for its start-up ecosystem, Montpellier has more than 1,350 digital companies, 15,000 jobs, and over 500 events per year in entrepreneurship and digital.



MAJOR PARTNER COMPANIES

CONFERENCES
JOBS
INTERNSHIPS

Montpellier Business School has partnerships with thousands of companies, and its Advisory Board includes 50 corporations that share its values and are involved in the school's strategic orientation and activities.



WHERE ARE THEY NOW?

CAREERS OF OUR GRADUATES



Tran Tuan LONG
Graduate 2017
Marketing Director
Chevrolet
Vietnam



Paola VALENCIA
Graduate 2015
Global Price Manager
Schneider
Spain



Ousmane Ly MOHAMED
Graduate 2015
Trucks Sales Manager
Renault trucks
Ghana



Yvan Mejia CARLOS
Graduate 2014
Economic Consultants
World bank
Washington

HOW TO APPLY ? PRACTICAL INFORMATION

The International Entrance Exam is aimed at applicants holding a foreign qualification at the level of **Baccalaureate + 3 or Baccalaureate + 4 equivalent to 180 ECTS credits.**

It enables them to join the Grande Ecole Programme, graduating with a Master's degree Baccalaureate + 5 endorsed and recognised by the French State, accredited AACSB and EPAS.

COMPLETE THE APPLICATION FORM ONLINE ON OUR WEBSITE AND ATTACH ALL REQUIRED DOCUMENTS:

<http://bit.ly/international-entrance-exam-MBS>

- CV
- Photo
- Copy of your identification (e.g. passport)
- Copies of highest degree obtained
- Copies of the past 3 years academic transcripts (including the current one)
- Students wishing to follow the French track and whose mother tongue is not French will have to pass a French test : TCF, DELF or DALF
Minimum required : B2 Level

IF SELECTED :

- English test : (free) Montpellier Business School English test or TOEFL (at least 80/120) or IELTS (at least 6.0/9) or TOEIC (at least 785/990)
- Logic and reasoning test: Montpellier Business School (free) test or GMAT, GRE, TAGE MAGE score
- Video interview

APPLICATION FEE: 90€



TUITION FEES for 2020 intake - Year 1

YEAR 1 : 12 500 € YEAR 2 : 12 500 €

- ▶ Guaranteed rates during all the school curriculum.
- ▶ No administrative fees, no additional costs.
- ▶ Extended payment options available.
- ▶ Individual scholarships may apply (up to 2000€ scholarship according to admission results).
- ▶ The academic year abroad doesn't require additional fees.



LIVING COSTS IN MONTPELLIER - 30 TO - 40% COMPARED TO PARIS

- ▶ Accommodation: 400 € to 600 € /month
- ▶ Miscellaneous expenses: 250 € to 400 € /month



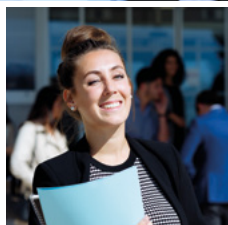
INTERNATIONAL STUDENTS SUPPORT

- ▶ Accommodation support (a precondition to obtaining a visa)
- ▶ Support to apply for a French visa
- ▶ Airport or train pick-up
- ▶ Help with administrative procedures (opening a bank account, telephone contract, insurance, French social security enrolment, etc.)
- ▶ Specific intake for international students



CONTACT US: ADMISSIONS DEPARTMENT

- ▶ APPLY2MASTER@MONTPELLIER-BS.COM
- ▶ +33 (0)4 67 10 60 16



Montpellier Business School
since 1897

Making a Difference

montpellier-bs.com



*Non contractual document.
This document was created for informative purposes.
Tracks, prices and conditions may be subject to change.*